

MA18 Series

The MA18 series is a 2mm pitch FFC socket connector developed for miniature HDD and main port connection. 44 contacts are provided for AT bus connection.

Ordering Information

MA18A - 44 D A - 2 DSA

① ② ③ ④ ⑤ ⑥

| | |
|---|--|
| ① Series Name : MA18A | ⑥ Contact type (Straight type) DSA : Dip length 3mm DSB : Dip length 2.5mm DSC : Dip length 2mm |
| ② Number of contacts : 44 | |
| ③ Contact alignment : D : Double row | |
| ④ Contact plating type A : Selective gold plated | |
| ⑤ Contact pitch : 2mm | |

Variation in Number of Contacts

| Part Number | CL No. | Remarks | RoHS |
|---------------------|---------------|-------------------------|------|
| MA18A-44DA-2DSA(71) | 588-0247-3-71 | — | YES |
| MA18A-44DA-2DSB(71) | 588-0255-1-71 | — | |
| MA18A-44DA-2DSC(71) | 588-0253-6-71 | — | |
| MA18M-44DA-2DSB(71) | 588-0291-5-71 | High profile mount type | |

Variation in Connection between HDD and Main Board

■ Pin Heade

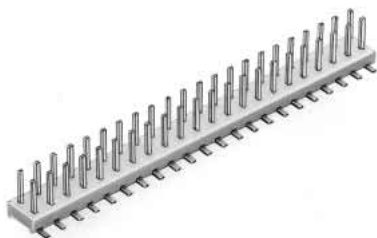
(1) Conventional product (used as conventional HDD interface pin header)

- Straight through hole type (see catalog page C15)



44 contacts : A3C-44P-2DSA (see photo)
50 contacts : A3C-50P-2DSA

- Straight SMT type (see catalog page C22)



44 contacts : A3-44PA-2SV(71) (see photo)
50 contacts : A3-50PA-2SV(71)
(With boss type available)

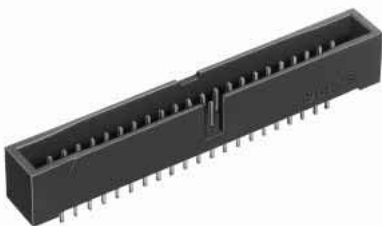
- Right angle through hole type (see catalog page C13)



44 contacts : A3B-44PA-2DS(71) (see photo)
50 contacts : A3B-50PA-2DS(71)

(2) Box type product (Socket side prevents mis-insertion)

- Straight through hole type(see catalog page C28)



44 contacts : A3E-44PA-2DSA(71) (see photo)
50 contacts : A3E-50PA-2DSA(71)
Note: Correspond to A3E series socket only.

■ Socket

(1) Products suitable to various cables

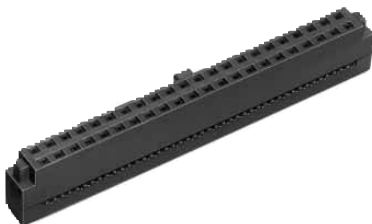
- Discrete wire Crimping Type (see catalog page C19)



44 contacts: A3B-44D-2C

Crimping contacts and crimping tools are detailed on page C20.

- Ribbon Cable (1mm pitch) Batch ID Type (see catalog page C29)

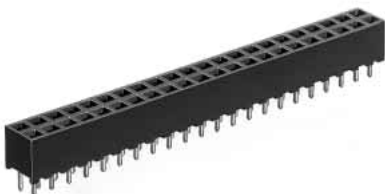


44 contacts: A3E-44D-2R (see photo)

50 contacts: A3E-50D-2R

Insulation displacement is detailed on page C31.

- FPC Connection Type



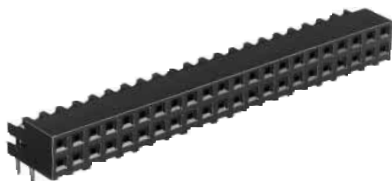
44 contacts: MA18A-44DA-2DSA(71) (photo)

(For a typical example, products are provided corresponding to various board thickness. For details, refer to page C32.)

50 contacts: A3C-50DA-2DSC(71)

(For a typical example, products are provided corresponding to various board thickness. For details, refer to page C17.)

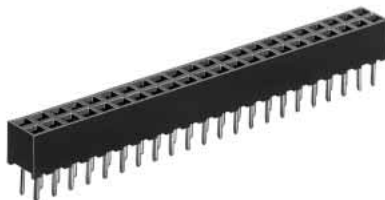
(2) Right Angle through hole Type (see catalog page C16.)



44 contacts: A3-44DA-2DS(71) (see photo)

50 contacts: A3-50DA-2DS(71)

(3) Straight through hole Type



44 contacts: MA18A-44DA-2DSA(71) (see photo)
(See catalog page C32.)

50 contacts: A3C-50DA-2DSA(71) (see catalog page C17.)